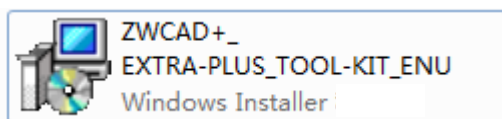
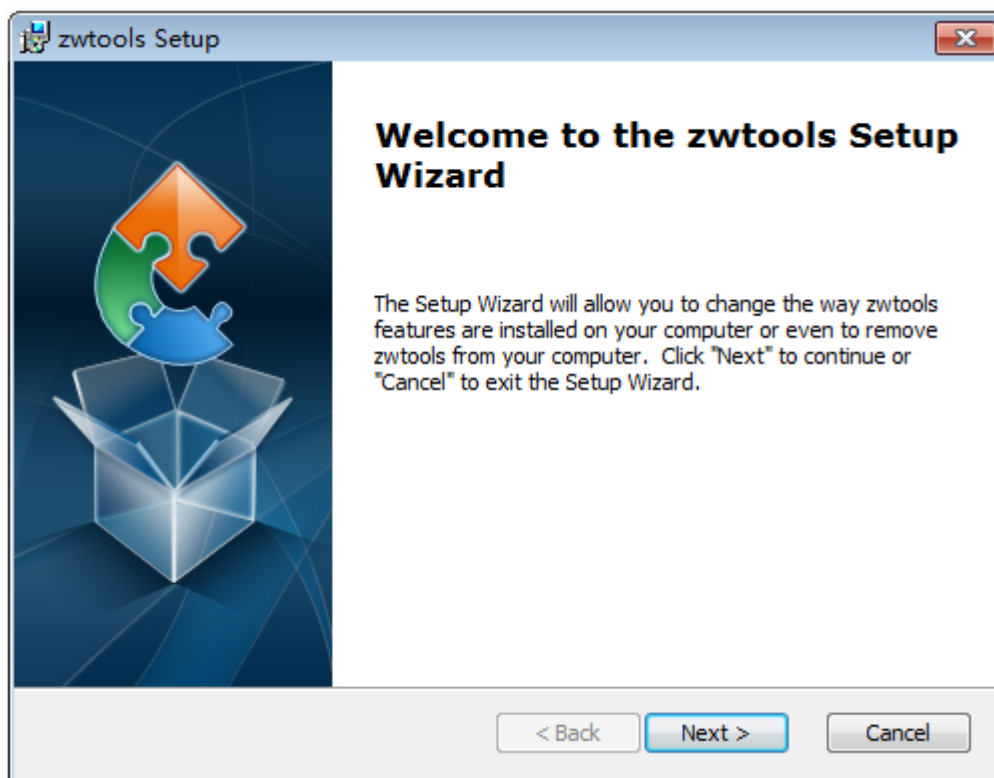


How to Install the Extra-plus Tool-kit

1. Download the package

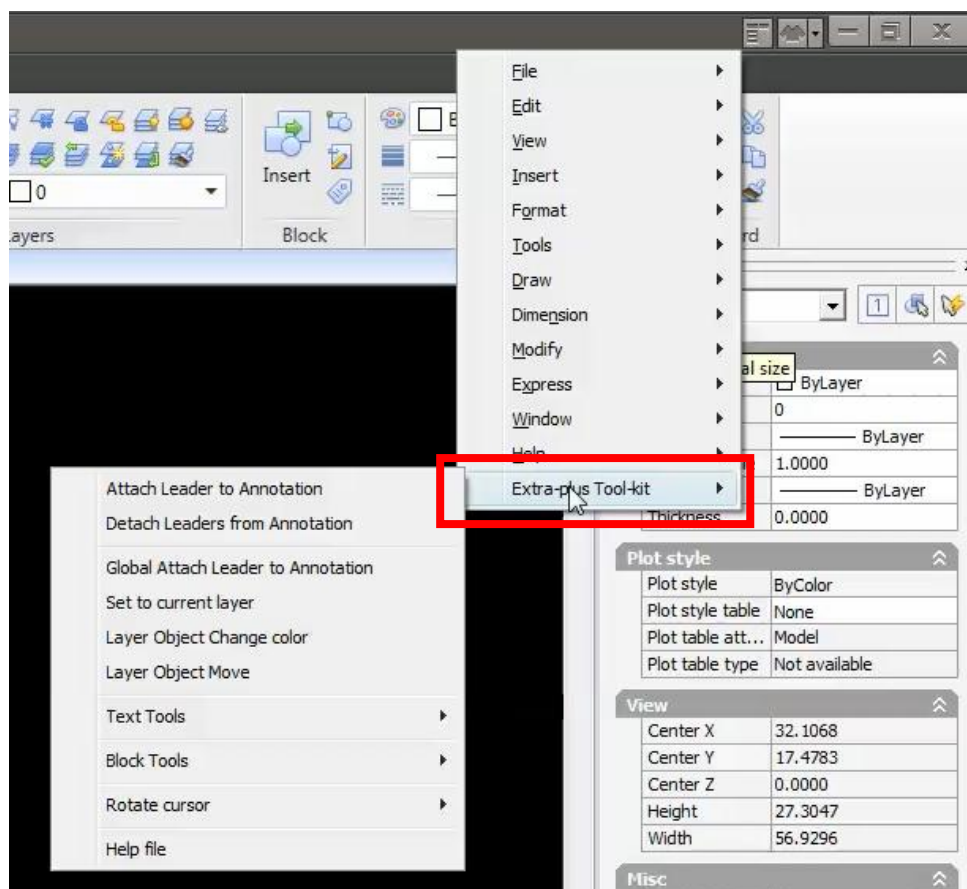


2. Start to install

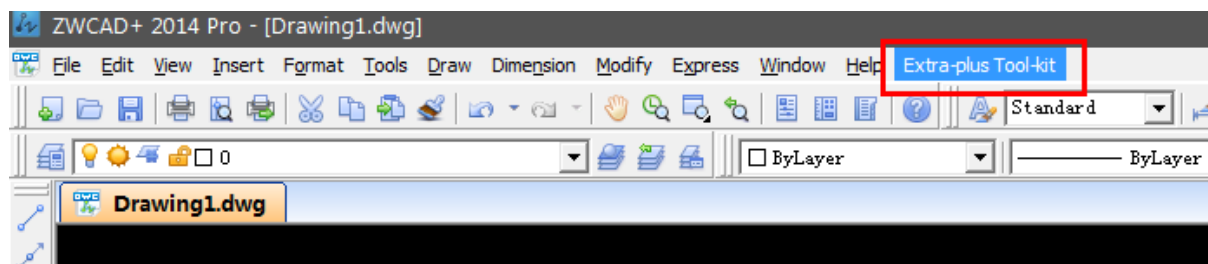


3. After installation, here to find the tool-kit in Ribbon and Classic interfaces

1) Ribbon interface

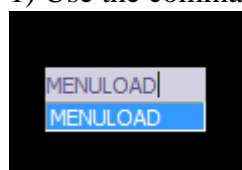


2) Classic interface

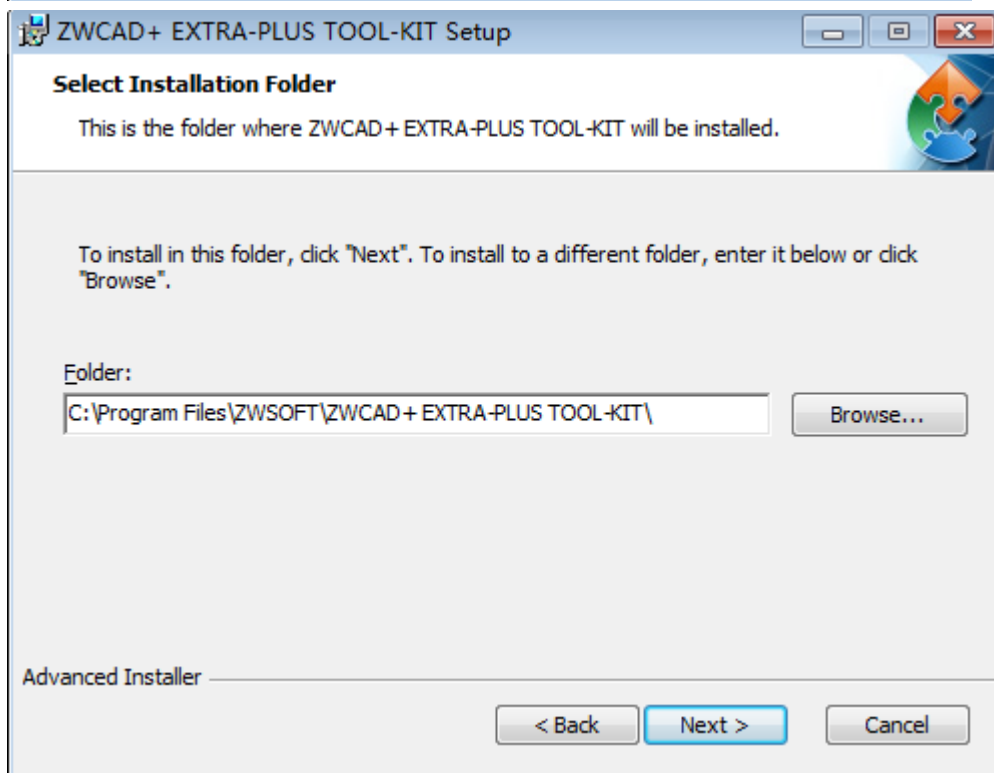
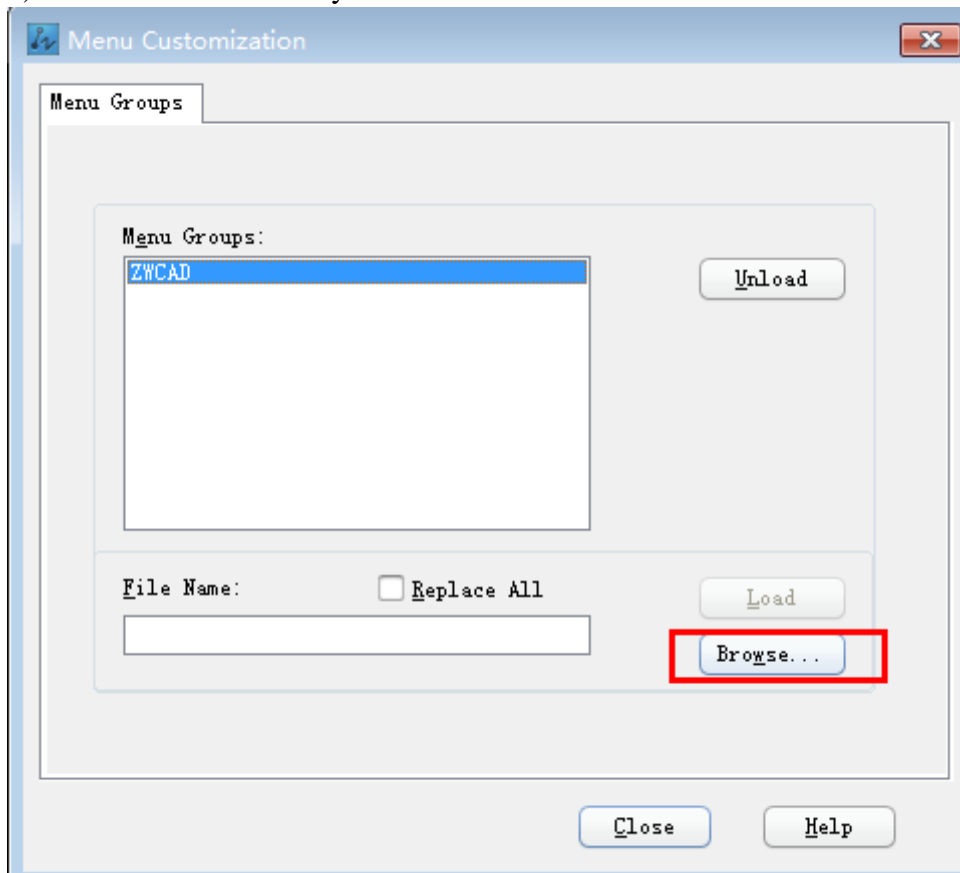


4. Sometimes you may need to upload the tool-kit manually due to some uncertain technical issue (we are working on it now)

1) Use the command of MENULOAD



2) Browse the file where you installed the tool-kit



3) Upload the .mns file

